

Predicted High Park Fire Flood Response: Pendergrass & Poverty



USDA Natural Resources Conservation Service

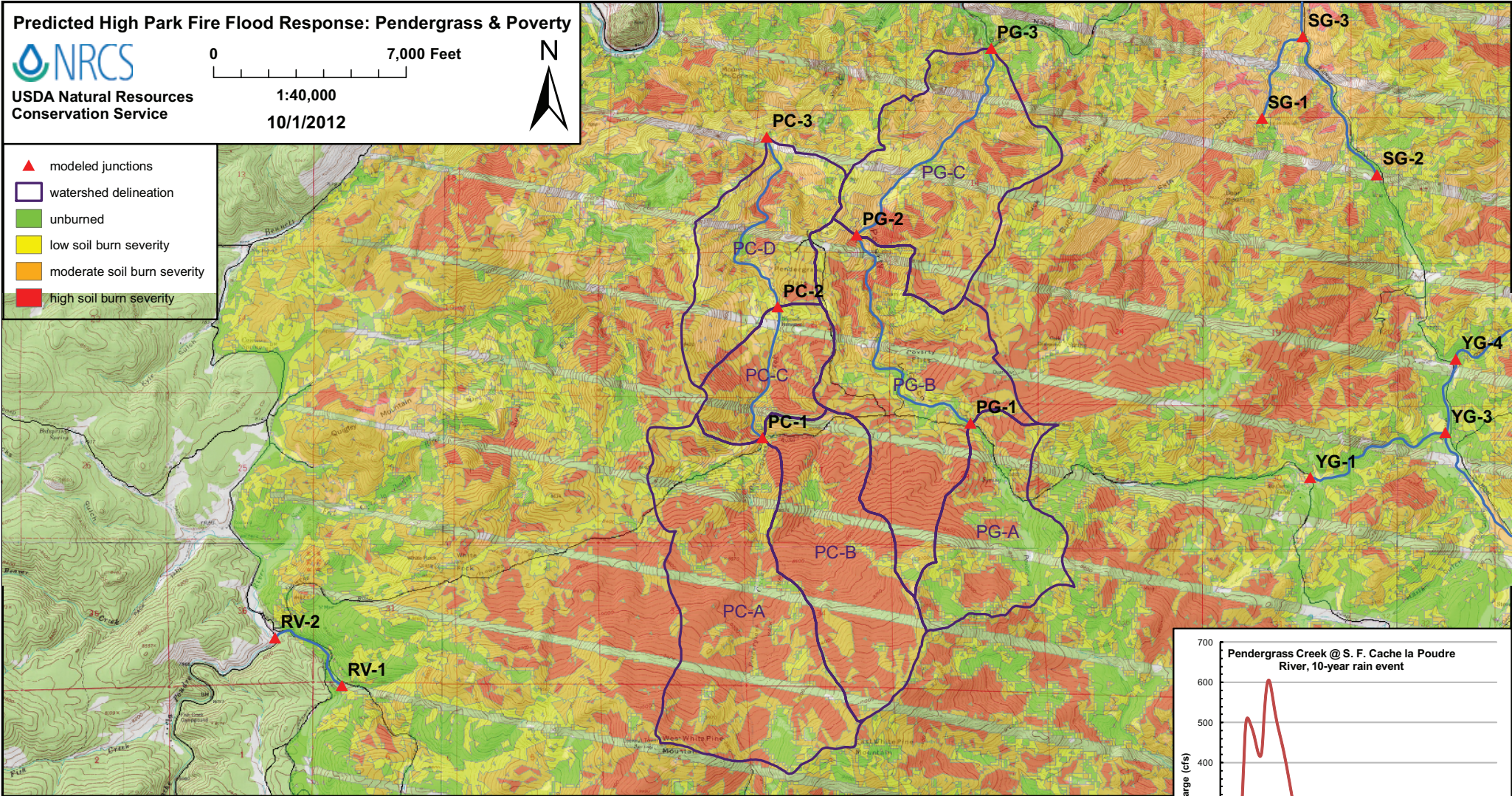
0 7,000 Feet

1:40,000

10/1/2012



- ▲ modeled junctions
- watershed delineation
- unburned
- low soil burn severity
- moderate soil burn severity
- high soil burn severity



Junction or Catchment	Drainage Area (mi ²)	2-Year Rain Event (0.8 inches)				10-Year Rain Event (1.6 inches)				25-Year Rain Event (1.8 inches)				50-Year Rain Event (2.2 inches)				100-Year Rain Event (2.4 inches)			
		Pred. Flow (cfs)	Post/Pre	Peak Flow	Sed. Bulking	Pred. Flow (cfs)	Post/Pre	Peak Flow	Sed. Bulking	Pred. Flow (cfs)	Post/Pre	Peak Flow	Sed. Bulking	Pred. Flow (cfs)	Post/Pre	Peak Flow	Sed. Bulking	Pred. Flow (cfs)	Post/Pre	Peak Flow	Sed. Bulking
Pendergrass Creek A	2.16	0	16	n/a	23	0	260	n/a	330	7.4	440	59	550	51	710	14	690	85	660	10	1100
Pendergrass Creek B	1.36	0	14	n/a	16	0	180	n/a	220	0	290	n/a	370	4.3	470	109	590	13	570	44	710
PC-1	3.62	0	32	n/a	40	0	440	n/a	550	7.4	730	98	910	55	1200	21	1500	96	1400	15	1800
PC-2	4.11	3.6	58	16	73	76	520	6.8	650	130	860	6.5	1100	230	1400	6.1	1700	280	1700	6.1	2100
PC-3	5.13	3.2	96	30	120	150	610	4.1	760	260	1000	3.8	1300	460	1700	3.6	2100	570	2000	3.5	2500
PG-1	0.97	0	0	n/a	0	0.1	58	580	73	9.9	110	11	140	41	200	4.9	250	63	250	4.0	320
PG-2	2.76	0.2	95	475	120	110	480	4.3	600	200	710	3.5	880	360	1000	2.9	1300	450	1200	2.7	1500
PG-3	4.31	0.2	100	500	130	120	650	5.4	810	240	980	4.0	1200	460	1500	3.2	1800	600	1700	2.9	2200

